


PBS SERIES

PUSHBUTTON SWITCHES UP TO 3A 125VAC
Panel mounting, on-off, momentary on or off



- Rating: 1A 125VAC/250VAC
- Contact resistance : 30mΩ (max)
- Insulation resistance : DC500V 100MΩ (min.)
- Dielectric voltage-withstand : 1,000 VAC for 1 minute
- Operation force : 300g±50
- Life cycle : 6,000 cycles
- Temperature range : 0°C to + 65°C

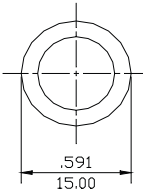
- Base : phenolic
- Actuator : NYLON, optional color
- Cover : ABS
- Terminal : Brass
- Contact : Silver
- Washer : Steel
- Nut: Steel
- Switching function : on-off, off-momentary on, or on - momentary off

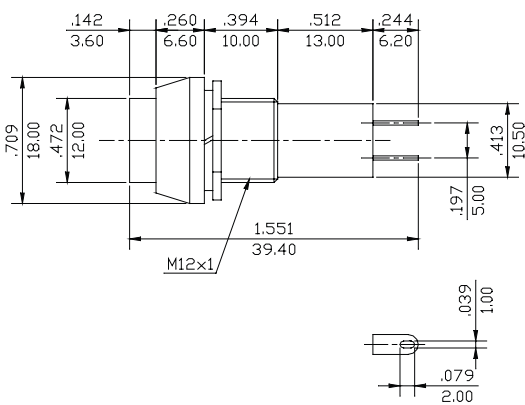


PBS-11A
ON-OFF

PBS-11B
OFF-(ON)

PBS-11C
ON-(OFF)





PBS SERIES

PUSHBUTTON SWITCHES UP TO 3A 125VAC
Panel mounting, on-off, momentary on or off



PBS-14A

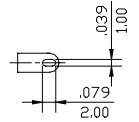
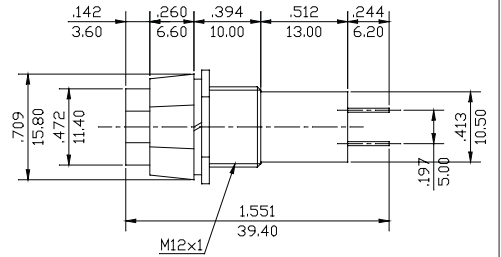
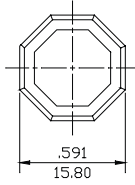
ON-OFF

PBS-14B

OFF-(ON)

PBS-14C

ON-(OFF)



PBS-16A

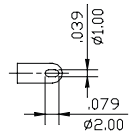
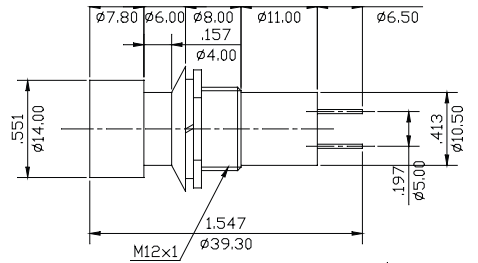
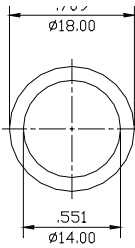
ON-OFF

PBS-16B

OFF-(ON)

PBS-16C

ON-(OFF)



PBS-12A

ON-OFF

PBS-12B

OFF-(ON)

